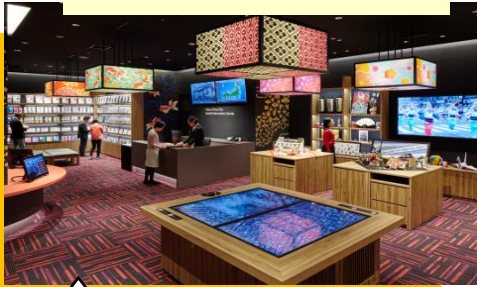


Chuo City Public Facility Tour for Foreign Residents

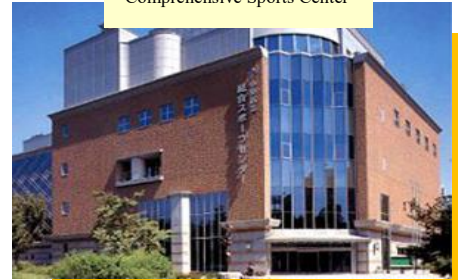
Tokyo Chuo City Tourist Information Center



Ozu Museum
(Traditional Japanese paper)



Comprehensive Sports Center



Entry Fee
FREE

March 6th (Sat.)

Schedule

- 13:00 Depart from Chuo City Office by bus
(Meet at 12:50)
- 13:10 **Tokyo Chuo City Tourist Information Center**
- 14:05 **Ozu Museum (Traditional Japanese paper)**
- 15:20 **Comprehensive Sports Center**
- 16:30 Return to Chuo City Office and break up there

Apply

- Eligibility : Foreign nationals (Priority is given to residents & workers in Chuo City)
- Capacity : 10 people (drawing of lots) The minimum participant count shall be three persons.
- Application period : Application period ends on 18th (Thurs.) Feb.

The participation right is to be decided by a lottery, and the result of it is to be sent to you by e-mail on 19th (Fri.) Feb. If there is still room to accept more participants after the lottery, on and after 19th Feb. , an application of participation is accepted first-come-first served basis.

- How to apply : Please apply by writing your ①name②address③phone number④nationality
⑤gender⑥age⑦e-mail address on your e-mail or facsimile.

Cautions

- This tour is performed by bilingual basis, English and Japanese. Please let us know when booking if you need any foreign language guides other than English.
- Your name must be exactly the same as the one on your PASSPORT (order, spelling) when making applications.
- In order to prevent COVID19 expansion, the person with 37.5°C or over on the date cannot participate the tour.
- During the tour, please cooperate the smooth operation, such as wearing a mask, disinfecting with alcohol and so on.
- If the number of participants does not reach the minimum count, the tour shall be cancelled accordingly.
- The tour may be cancelled due to worsened situation of COVID19 and/or unexpected rough weather.

For foreign residents, we offer a bus tour in English to help learn more about our facilities and services.

This year, we are to visit “Tokyo Chuo City Tourist Information Center” sending out the charm and information of the City, “Ozu Museum” (Traditional Japanese paper) among various Machikado Museums set up for people to know several cultural resources remained in the City, and lastly "Comprehensive Sports Center" to help improve your health.



One minutes walk from Exit # 1of Shintomicho Station
(Tokyo Metro Yurakucho Line)

[Application and Inquiries to]

Cultural Affairs and Lifelong Learning Section Community Services Department Chuo City Office (1-1-1 Tsukiji, Chuo-ku Tokyo)

E-Mail : b-syogai_01@city.chuo.lg.jp

TEL : 03-3546-5645

FAX : 03-3546-9556

English Assistance Service are available on every Mon. Tue. & Thur. 9:30~12:00, 13:00~17:00 except for year-end and new-year holidays.