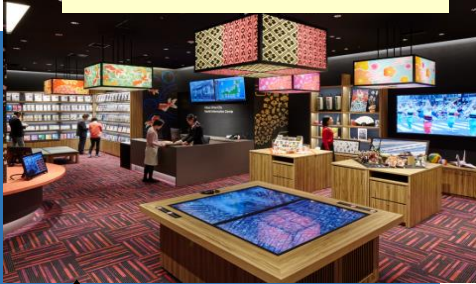


Public Facility Bus Tour for Foreign Residents

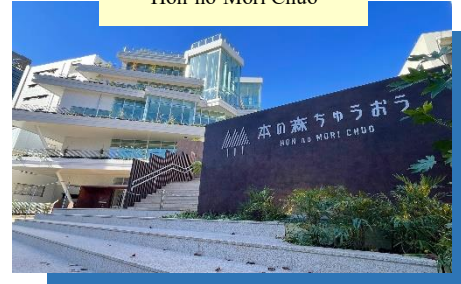
Tokyo Chuo City Tourist Information Center



Ozu Museum
(traditional Japanese paper)



Hon-no-Mori Chuo



Entry Fee
FREE

25th (Sat.) February

Waiting for your
Applications

Newly built
facilities and
Historical Museums

Schedule

- 13:00 Depart from Chuo City Office by bus
(Meet at 12:50)
- 13:10 **Tokyo Chuo City Tourist Information Center**
- 14:05 **Ozu Museum (traditional Japanese paper)**
- 15:20 **Hon-no-Mori Chuo**
- 16:30 Return to Chuo City Office and break up there



Apply

- Eligibility : Foreign nationals (Priority is given to residents & workers in Chuo City)
- Capacity : 15 people (drawing) The minimum participant count shall be three persons.
- Application period : Application period ends on 15th (Wed.) Feb.
The participation right is to be decided by a lottery, and the result of it is to be sent to you by e-mail on 16th(Thur.) Feb.
- How to apply : Please apply by writing your ①name(the spell and the order are exactly same with the one on your passport)②address③phone number④nationality⑤comprehensible language⑥age, and send it by e-mail.



One minute walk from Exit # 1of Shintoshimochi Station
(Tokyo Metro Yurakucho Line)

Cautions

- This tour is performed by bilingual basis, English and Japanese.
- In order to prevent COVID19 expansion, the person with 37.5°C or over on the date cannot participate the tour.
- During the tour, please cooperate the smooth operation, such as wearing a mask, disinfecting with alcohol and so on.
- The tour may be cancelled due to worsened situation of COVID19 and/or unexpected rough weather.

[Application and Inquiries to]

Cultural Affairs and Lifelong Learning Section Community Services Department Chuo City Office (1-1-1 Tsukiji, Chuo City Tokyo)
TEL : 03(3546)5346 Japanese only
TEL : 03(3546)5645 English Assistance is available on every Mon. & Thur. 9:30~12:00, 13:00~17:00
E-Mail : b-syogai_01@city.chuo.lg.jp